

SIG Proceedings Paper in LaTeX Format*

Extended Abstract[†]

Ben Trovato[‡]
Institute for Clarity in Documentation
Dublin, Ohio
trovato@corporation.com

G.K.M. Tobin[§]
Institute for Clarity in Documentation
Dublin, Ohio
webmaster@marysville-ohio.com

Lars Thørväld[¶]
The Thørväld Group
Hekla, Iceland
larst@affiliation.org

Valerie Béranger
Inria Paris-Rocquencourt
Rocquencourt, France

Aparna Patel
Rajiv Gandhi University
Doimukh, Arunachal Pradesh, India

Huifen Chan
Tsinghua University
Haidian Qu, Beijing Shi, China

Charles Palmer
Palmer Research Laboratories
San Antonio, Texas
cpalmer@prl.com

John Smith
The Thørväld Group
jsmith@affiliation.org

Julius P. Kumquat
The Kumquat Consortium
jpkumquat@consortium.net

ABSTRACT

This paper provides a sample of a \LaTeX document which conforms, somewhat loosely, to the formatting guidelines for ACM SIG Proceedings.¹

CCS CONCEPTS

• **Computer systems organization** → **Embedded systems**; *Redundancy*; Robotics; • **Networks** → Network reliability;

KEYWORDS

ACM proceedings, \LaTeX , text tagging

ACM Reference Format:

Ben Trovato, G.K.M. Tobin, Lars Thørväld, Valerie Béranger, Aparna Patel, Huifen Chan, Charles Palmer, John Smith, and Julius P. Kumquat. 1997. SIG Proceedings Paper in LaTeX Format: Extended Abstract. In *Proceedings of ACM Woodstock conference (WOODSTOCK'97)*, Jennifer B. Sartor, Theo D'Hondt, and Wolfgang De Meuter (Eds.). ACM, New York, NY, USA, Article 4, 5 pages. https://doi.org/10.475/123_4

1 INTRODUCTION

The *proceedings* are the records of a conference.² ACM seeks to give these conference by-products a uniform, high-quality appearance. To do this, ACM has some rigid requirements for the format of the

proceedings documents: there is a specified format (balanced double columns), a specified set of fonts (Arial or Helvetica and Times Roman) in certain specified sizes, a specified live area, centered on the page, specified size of margins, specified column width and gutter size.

2 THE BODY OF THE PAPER

Typically, the body of a paper is organized into a hierarchical structure, with numbered or unnumbered headings for sections, subsections, sub-subsections, and even smaller sections. The command `\section` that precedes this paragraph is part of such a hierarchy.³ \LaTeX handles the numbering and placement of these headings for you, when you use the appropriate heading commands around the titles of the headings. If you want a sub-subsection or smaller part to be unnumbered in your output, simply append an asterisk to the command name. Examples of both numbered and unnumbered headings will appear throughout the balance of this sample document.

Because the entire article is contained in the **document** environment, you can indicate the start of a new paragraph with a blank line in your input file; that is why this sentence forms a separate paragraph.

2.1 Type Changes and Special Characters

We have already seen several typeface changes in this sample. You can indicate italicized words or phrases in your text with the command `\textit`; boldening with the command `\textbf` and typewriter-style (for instance, for computer code) with `\texttt`. But remember, you do not have to indicate typestyle changes when such changes are part of the *structural* elements of your article; for instance, the heading of this subsection will be in a sans serif⁴ typeface, but that is handled by the document class file. Take care

*Produces the permission block, and copyright information

[†]The full version of the author's guide is available as `acmart.pdf` document

[‡]Dr. Trovato insisted his name be first.

[§]The secretary disavows any knowledge of this author's actions.

[¶]This author is the one who did all the really hard work.

¹This is an abstract footnote

²This is a footnote

Permission to make digital or hard copies of part or all of this work for personal or classroom use is granted without fee provided that copies are not made or distributed for profit or commercial advantage and that copies bear this notice and the full citation on the first page. Copyrights for third-party components of this work must be honored. For all other uses, contact the owner/author(s).

WOODSTOCK'97, July 1997, El Paso, Texas USA

© 2016 Copyright held by the owner/author(s).

ACM ISBN 123-4567-24-567/08/06...\$15.00

https://doi.org/10.475/123_4

³This is a footnote.

⁴Another footnote here. Let's make this a rather long one to see how it looks.

with the use of⁵ the curly braces in typeface changes; they mark the beginning and end of the text that is to be in the different typeface.

You can use whatever symbols, accented characters, or non-English characters you need anywhere in your document; you can find a complete list of what is available in the *L^AT_EX User's Guide* [26].

2.2 Math Equations

You may want to display math equations in three distinct styles: inline, numbered or non-numbered display. Each of the three are discussed in the next sections.

2.2.1 Inline (In-text) Equations. A formula that appears in the running text is called an inline or in-text formula. It is produced by the **math** environment, which can be invoked with the usual `\begin . . . \end` construction or with the short form `$. . . $`. You can use any of the symbols and structures, from α to ω , available in L^AT_EX [26]; this section will simply show a few examples of in-text equations in context. Notice how this equation: $\lim_{n \rightarrow \infty} x = 0$, set here in in-line math style, looks slightly different when set in display style. (See next section).

2.2.2 Display Equations. A numbered display equation—one set off by vertical space from the text and centered horizontally—is produced by the **equation** environment. An unnumbered display equation is produced by the **displaymath** environment.

Again, in either environment, you can use any of the symbols and structures available in L^AT_EX; this section will just give a couple of examples of display equations in context. First, consider the equation, shown as an inline equation above:

$$\lim_{n \rightarrow \infty} x = 0 \quad (1)$$

Notice how it is formatted somewhat differently in the **displaymath** environment. Now, we'll enter an unnumbered equation:

$$\sum_{i=0}^{\infty} x + 1$$

and follow it with another numbered equation:

$$\sum_{i=0}^{\infty} x_i = \int_0^{\pi+2} f \quad (2)$$

just to demonstrate L^AT_EX's able handling of numbering.

2.3 Citations

Citations to articles [6–8, 19], conference proceedings [8] or maybe books [26, 34] listed in the Bibliography section of your article will occur throughout the text of your article. You should use BibTeX to automatically produce this bibliography; you simply need to insert one of several citation commands with a key of the item cited in the proper location in the `.tex` file [26]. The key is a short reference you invent to uniquely identify each work; in this sample document, the key is the first author's surname and a word from the title. This identifying key is included with each item in the `.bib` file for your article.

The details of the construction of the `.bib` file are beyond the scope of this sample document, but more information can be found

⁵Another footnote.

Table 1: Frequency of Special Characters

Non-English or Math	Frequency	Comments
Ø	1 in 1,000	For Swedish names
π	1 in 5	Common in math
\$	4 in 5	Used in business
Ψ_1^2	1 in 40,000	Unexplained usage

in the *Author's Guide*, and exhaustive details in the *L^AT_EX User's Guide* by Lamport [26].

This article shows only the plainest form of the citation command, using `\cite`.

Some examples. A paginated journal article [2], an enumerated journal article [11], a reference to an entire issue [10], a monograph (whole book) [25], a monograph/whole book in a series (see 2a in spec. document) [18], a divisible-book such as an anthology or compilation [13] followed by the same example, however we only output the series if the volume number is given [14] (so Editor00a's series should NOT be present since it has no vol. no.), a chapter in a divisible book [37], a chapter in a divisible book in a series [12], a multi-volume work as book [24], an article in a proceedings (of a conference, symposium, workshop for example) (paginated proceedings article) [4], a proceedings article with all possible elements [36], an example of an enumerated proceedings article [16], an informally published work [17], a doctoral dissertation [9], a master's thesis: [5], an online document / world wide web resource [1, 30, 38], a video game (Case 1) [29] and (Case 2) [28] and [27] and (Case 3) a patent [35], work accepted for publication [31], 'YYYYb'-test for prolific author [32] and [33]. Other cites might contain 'duplicate' DOI and URLs (some SIAM articles) [23]. Boris / Barbara Beeton: multi-volume works as books [21] and [20].

A couple of citations with DOIs: [22, 23].

Online citations: [38–40].

2.4 Tables

Because tables cannot be split across pages, the best placement for them is typically the top of the page nearest their initial cite. To ensure this proper "floating" placement of tables, use the environment **table** to enclose the table's contents and the table caption. The contents of the table itself must go in the **tabular** environment, to be aligned properly in rows and columns, with the desired horizontal and vertical rules. Again, detailed instructions on **tabular** material are found in the *L^AT_EX User's Guide*.

Immediately following this sentence is the point at which Table 1 is included in the input file; compare the placement of the table here with the table in the printed output of this document.

To set a wider table, which takes up the whole width of the page's live area, use the environment **table*** to enclose the table's contents and the table caption. As with a single-column table, this wide table will "float" to a location deemed more desirable. Immediately following this sentence is the point at which Table 2 is included in the input file; again, it is instructive to compare the placement of the table here with the table in the printed output of this document.

It is strongly recommended to use the package `booktabs` [15] and follow its main principles of typography with respect to tables:

Table 2: Some Typical Commands

Command	A Number	Comments
<code>\author</code>	100	Author
<code>\table</code>	300	For tables
<code>\table*</code>	400	For wider tables



Figure 1: A sample black and white graphic.

Figure 2: A sample black and white graphic that has been resized with the `includegraphics` command.

- (1) Never, ever use vertical rules.
- (2) Never use double rules.

It is also a good idea not to overuse horizontal rules.

2.5 Figures

Like tables, figures cannot be split across pages; the best placement for them is typically the top or the bottom of the page nearest their initial cite. To ensure this proper “floating” placement of figures, use the environment `figure` to enclose the figure and its caption.

This sample document contains examples of `.eps` files to be displayable with \LaTeX . If you work with `pdf \LaTeX` , use files in the `.pdf` format. Note that most modern \TeX systems will convert `.eps` to `.pdf` for you on the fly. More details on each of these are found in the *Author's Guide*.

As was the case with tables, you may want a figure that spans two columns. To do this, and still to ensure proper “floating” placement of tables, use the environment `figure*` to enclose the figure and its caption. And don't forget to end the environment with `figure*`, not `figure`!

2.6 Theorem-like Constructs

Other common constructs that may occur in your article are the forms for logical constructs like theorems, axioms, corollaries and proofs. ACM uses two types of these constructs: theorem-like and definition-like.

Here is a theorem:

THEOREM 2.1. *Let f be continuous on $[a, b]$. If G is an antiderivative for f on $[a, b]$, then*

$$\int_a^b f(t) dt = G(b) - G(a).$$

Here is a definition:

Definition 2.2. If z is irrational, then by e^z we mean the unique number that has logarithm z :

$$\log e^z = z.$$

The pre-defined theorem-like constructs are **theorem**, **conjecture**, **proposition**, **lemma** and **corollary**. The pre-defined definition-like constructs are **example** and **definition**. You can add your own constructs using the *amsthm* interface [3]. The styles used in the `\theoremstyle` command are **acmplain** and **acmdefinition**.

Another construct is **proof**, for example,

PROOF. Suppose on the contrary there exists a real number L such that

$$\lim_{x \rightarrow \infty} \frac{f(x)}{g(x)} = L.$$

Then

$$l = \lim_{x \rightarrow c} f(x) = \lim_{x \rightarrow c} \left[g(x) \cdot \frac{f(x)}{g(x)} \right] = \lim_{x \rightarrow c} g(x) \cdot \lim_{x \rightarrow c} \frac{f(x)}{g(x)} = 0 \cdot L = 0,$$

which contradicts our assumption that $l \neq 0$. \square

3 CONCLUSIONS

This paragraph will end the body of this sample document. Remember that you might still have Acknowledgments or Appendices; brief samples of these follow. There is still the Bibliography to deal with; and we will make a disclaimer about that here: with the exception of the reference to the \LaTeX book, the citations in this paper are to articles which have nothing to do with the present subject and are used as examples only.

A HEADINGS IN APPENDICES

The rules about hierarchical headings discussed above for the body of the article are different in the appendices. In the **appendix** environment, the command **section** is used to indicate the start of each Appendix, with alphabetic order designation (i.e., the first is A, the second B, etc.) and a title (if you include one). So, if you need hierarchical structure *within* an Appendix, start with **subsection** as the highest level. Here is an outline of the body of this document in Appendix-appropriate form:

A.1 Introduction

A.2 The Body of the Paper

A.2.1 Type Changes and Special Characters.

A.2.2 Math Equations.

Inline (In-text) Equations.

Display Equations.

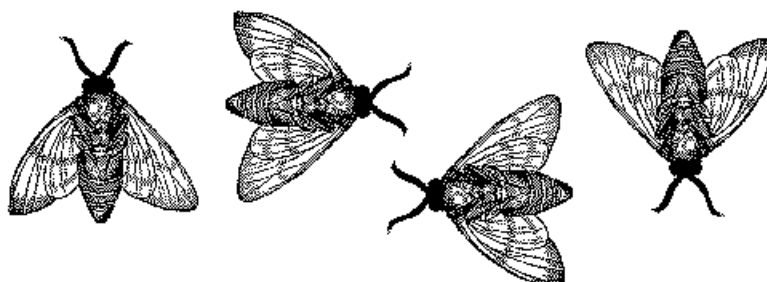


Figure 3: A sample black and white graphic that needs to span two columns of text.



Figure 4: A sample black and white graphic that has been resized with the `includegraphics` command.

A.2.3 Citations.

A.2.4 Tables.

A.2.5 Figures.

A.2.6 Theorem-like Constructs.

A Caveat for the \TeX Expert.

A.3 Conclusions

A.4 References

Generated by bibtex from your `.bib` file. Run latex, then bibtex, then latex twice (to resolve references) to create the `.bbl` file. Insert that `.bbl` file into the `.tex` source file and comment out the command `\thebibliography`.

B MORE HELP FOR THE HARDY

Of course, reading the source code is always useful. The file `acmart.pdf` contains both the user guide and the commented code.

ACKNOWLEDGMENTS

The authors would like to thank Dr. Yuhua Li for providing the MATLAB code of the *BEPS* method.

The authors would also like to thank the anonymous referees for their valuable comments and helpful suggestions. The work is supported by the National Natural Science Foundation of China under Grant No.: 61273304 and Young Scientists' Support Program (<http://www.nnsf.cn/youngscientists>).

REFERENCES

- [1] Rafal Ablamowicz and Bertfried Fauser. 2007. CLIFFORD: a Maple 11 Package for Clifford Algebra Computations, version 11. (2007). Retrieved February 28, 2008 from <http://math.tntech.edu/rafal/cliff11/index.html>
- [2] Patricia S. Abril and Robert Plant. 2007. The patent holder's dilemma: Buy, sell, or troll? *Commun. ACM* 50, 1 (Jan. 2007), 36–44. <https://doi.org/10.1145/1188913.1188915>
- [3] American Mathematical Society. 2015. *Using the amsthm Package*. American Mathematical Society. <http://www.ctan.org/pkg/amsthm>.
- [4] Sten Andler. 1979. Predicate Path expressions. In *Proceedings of the 6th. ACM SIGACT-SIGPLAN symposium on Principles of Programming Languages (POPL '79)*. ACM Press, New York, NY, 226–236. <https://doi.org/10.1145/567752.567774>
- [5] David A. Anisi. 2003. *Optimal Motion Control of a Ground Vehicle*. Master's thesis. Royal Institute of Technology (KTH), Stockholm, Sweden.
- [6] Mic Bowman, Saumya K. Debray, and Larry L. Peterson. 1993. Reasoning About Naming Systems. *ACM Trans. Program. Lang. Syst.* 15, 5 (November 1993), 795–825. <https://doi.org/10.1145/161468.161471>
- [7] Johannes Braams. 1991. Babel, a Multilingual Style-Option System for Use with LaTeX's Standard Document Styles. *TUGboat* 12, 2 (June 1991), 291–301.
- [8] Malcolm Clark. 1991. Post Congress Tristesse. In *TeX90 Conference Proceedings*. TeX Users Group, 84–89.
- [9] Kenneth L. Clarkson. 1985. *Algorithms for Closest-Point Problems (Computational Geometry)*. Ph.D. Dissertation. Stanford University, Palo Alto, CA. UMI Order Number: AAT 8506171.
- [10] Jacques Cohen (Ed.). 1996. Special issue: Digital Libraries. *Commun. ACM* 39, 11 (Nov. 1996).
- [11] Sarah Cohen, Werner Nutt, and Yehoshua Sagie. 2007. Deciding equivalences among conjunctive aggregate queries. *J. ACM* 54, 2, Article 5 (April 2007), 50 pages. <https://doi.org/10.1145/1219092.1219093>
- [12] Bruce P. Douglass, David Harel, and Mark B. Trakhtenbrot. 1998. Statecharts in use: structured analysis and object-orientation. In *Lectures on Embedded Systems*, Grzegorz Rozenberg and Frits W. Vaandrager (Eds.). Lecture Notes in Computer Science, Vol. 1494. Springer-Verlag, London, 368–394. https://doi.org/10.1007/3-540-65193-4_29
- [13] Ian Editor (Ed.). 2007. *The title of book one* (1st. ed.). The name of the series one, Vol. 9. University of Chicago Press, Chicago. <https://doi.org/10.1007/3-540-09237-4>
- [14] Ian Editor (Ed.). 2008. *The title of book two* (2nd. ed.). University of Chicago Press, Chicago, Chapter 100. <https://doi.org/10.1007/3-540-09237-4>
- [15] Simon Fear. 2005. *Publication quality tables in B_TE_X*. <http://www.ctan.org/pkg/booktabs>.
- [16] Matthew Van Gundy, Davide Balzarotti, and Giovanni Vigna. 2007. Catch me, if you can: Evading network signatures with web-based polymorphic worms. In *Proceedings of the first USENIX workshop on Offensive Technologies (WOOT '07)*. USENIX Association, Berkley, CA, Article 7, 9 pages.
- [17] David Harel. 1978. *LOGICS of Programs: AXIOMATICS and DESCRIPTIVE POWER*. MIT Research Lab Technical Report TR-200. Massachusetts Institute of Technology, Cambridge, MA.
- [18] David Harel. 1979. *First-Order Dynamic Logic*. Lecture Notes in Computer Science, Vol. 68. Springer-Verlag, New York, NY. <https://doi.org/10.1007/3-540-09237-4>
- [19] Maurice Herlihy. 1993. A Methodology for Implementing Highly Concurrent Data Objects. *ACM Trans. Program. Lang. Syst.* 15, 5 (November 1993), 745–770. <https://doi.org/10.1145/161468.161469>
- [20] Lars Hörmander. 1985. *The analysis of linear partial differential operators. III*. Grundlehren der Mathematischen Wissenschaften [Fundamental Principles of Mathematical Sciences], Vol. 275. Springer-Verlag, Berlin, Germany. viii+525 pages. Pseudodifferential operators.

- [21] Lars Hörmander. 1985. *The analysis of linear partial differential operators. IV*. Grundlehren der Mathematischen Wissenschaften [Fundamental Principles of Mathematical Sciences], Vol. 275. Springer-Verlag, Berlin, Germany. vii+352 pages. Fourier integral operators.
- [22] IEEE 2004. IEEE TCSC Executive Committee. In *Proceedings of the IEEE International Conference on Web Services (ICWS '04)*. IEEE Computer Society, Washington, DC, USA, 21–22. <https://doi.org/10.1109/ICWS.2004.64>
- [23] Markus Kirschmer and John Voight. 2010. Algorithmic Enumeration of Ideal Classes for Quaternion Orders. *SIAM J. Comput.* 39, 5 (Jan. 2010), 1714–1747. <https://doi.org/10.1137/080734467>
- [24] Donald E. Knuth. 1997. *The Art of Computer Programming, Vol. 1: Fundamental Algorithms (3rd. ed.)*. Addison Wesley Longman Publishing Co., Inc.
- [25] David Kosiur. 2001. *Understanding Policy-Based Networking* (2nd. ed.). Wiley, New York, NY.
- [26] Leslie Lamport. 1986. *L^AT_EX: A Document Preparation System*. Addison-Wesley, Reading, MA.
- [27] Newton Lee. 2005. Interview with Bill Kinder: January 13, 2005. Video. *Comput. Entertain.* 3, 1, Article 4 (Jan.-March 2005). <https://doi.org/10.1145/1057270.1057278>
- [28] Dave Novak. 2003. Solder man. Video. In *ACM SIGGRAPH 2003 Video Review on Animation theater Program: Part I - Vol. 145 (July 27–27, 2003)*. ACM Press, New York, NY, 4. <https://doi.org/99.9999/woot07-S422>
- [29] Barack Obama. 2008. A more perfect union. Video. (5 March 2008). Retrieved March 21, 2008 from <http://video.google.com/videoplay?docid=6528042696351994555>
- [30] Poker-Edge.Com. 2006. Stats and Analysis. (March 2006). Retrieved June 7, 2006 from <http://www.poker-edge.com/stats.php>
- [31] Bernard Rous. 2008. The Enabling of Digital Libraries. *Digital Libraries* 12, 3, Article 5 (July 2008). To appear.
- [32] Mehdi Saeedi, Morteza Saheb Zamani, and Mehdi Sedighi. 2010. A library-based synthesis methodology for reversible logic. *Microelectron. J.* 41, 4 (April 2010), 185–194.
- [33] Mehdi Saeedi, Morteza Saheb Zamani, Mehdi Sedighi, and Zahra Sasanian. 2010. Synthesis of Reversible Circuit Using Cycle-Based Approach. *J. Emerg. Technol. Comput. Syst.* 6, 4 (Dec. 2010).
- [34] S.L. Salas and Einar Hille. 1978. *Calculus: One and Several Variable*. John Wiley and Sons, New York.
- [35] Joseph Scientist. 2009. The fountain of youth. (Aug. 2009). Patent No. 12345, Filed July 1st., 2008, Issued Aug. 9th., 2009.
- [36] Stan W. Smith. 2010. An experiment in bibliographic mark-up: Parsing metadata for XML export. In *Proceedings of the 3rd. annual workshop on Librarians and Computers (LAC '10)*, Reginald N. Smythe and Alexander Noble (Eds.), Vol. 3. Paparazzi Press, Milan Italy, 422–431. <https://doi.org/99.9999/woot07-S422>
- [37] Asad Z. Spector. 1990. Achieving application requirements. In *Distributed Systems* (2nd. ed.), Sape Mullender (Ed.). ACM Press, New York, NY, 19–33. <https://doi.org/10.1145/90417.90738>
- [38] Harry Thornburg. 2001. Introduction to Bayesian Statistics. (March 2001). Retrieved March 2, 2005 from <http://ccrma.stanford.edu/~jos/bayes/bayes.html>
- [39] TUG 2017. Institutional members of the T_EX Users Group. (2017). Retrieved May 27, 2017 from <http://www.tug.org/instmem.html>
- [40] Boris Veytsman. [n. d.]. acmart—Class for typesetting publications of ACM. ([n. d.]). Retrieved May 27, 2017 from <http://www.ctan.org/pkg/acmart>